



Hotgen Biotech UPT Drug Abuse Test Kit Advantages

- Simple sampling: Convenient for on-site testing
- High sensitivity: Higher consistency with MS results
- Extended detection window: Identifies drug use from 3 days to 6 months, unaffected by metabolism
- Accurate: Automated digital results reduce subjective interpretation
- Award-Winning Innovation: Honored with the Second Prize of China's National Technology Invention Award.



Application scenarios



Target user group

Police Inspection: Drug screening for drug abuse suspects, individuals undergoing rehabilitation, entertainment venue employees, and consumers

Criminal Investigation and Drug Enforcement: Screening of drug abuse suspects

Border Inspection Screening: Drug screening at customs, border control, and immigration checkpoints

Addiction Assessment for Drug-Related Individuals: Re-examination of community rehabilitation subjects, analysis of past drug abuse history, and monitoring of substance abuse



Medical institution examination: Drug abuse screening for suspects of drug use or rehabilitation, as well as employees and consumers in entertainment venues.

Unit Physical Examination: Civil servants (staff of district-level government agencies, public institutions, mass organizations, state-owned enterprises (including labor dispatch personnel), and members of village Party branches and committees), military recruitment, special industry employment (civil servant recruitment, military recruitment physical examinations, etc.), and drug screening for school enrollment physical examinations.

Driver Examination: Drug screening for drivers of motor vehicles, trains, aircraft, ships, etc., as well as for driver's license application and reissuance physical examinations.

Drug driving screening: Drug-impaired driving screening
High-risk drug use groups: Such as personnel in entertainment venues like internet cafes, bars, as well as individuals undergoing community-based drug rehabilitation and community-based recovery.



UPT Drug Abuse Testing List

No.	Parameters	Sample Type	Lower limit of detection	Qualification
1	Methamphetamine (MET)	Hair	0.2 ng/mg	NMPA/CE
2	Ketamine(KET)	Hair	0.2 ng/mg	NMPA/CE
3	Morphine(MOP)	Hair	0.2 ng/mg	NMPA/CE
4	Tetrahydrocannabinol (THC)	Saliva	1ng/mL	CE



Hotgen Biotech UPT Drug Abuse Testing Solution



- ✓ Up-Converting Phosphor Technology
- ✓ Multi-Dimensional Quantitative Result Detection

The Cutting-Edge Technology in Drug Control

Beijing Hotgen Biotech Co.,Ltd

Tel: +86 010-50986588

Website: www.hotgenbiotech.com

E-mail: sales@hotgen.com.cn

Add.: No.55, Qingfeng West Road, Daxing District, Beijing, 102600, P.R. China



Product Background - A Large Number of Drug Users

《World Drug Report 2022》:

Approximately 284 million people worldwide use drugs, with around 31 million suffering from drug addiction.

It is projected that by 2030, the number of drug users will increase by 11%, with over 36 million people developing mental disorders due to drug abuse.



1.UPT Hair Drug Abuse Testing Products



Ketamine hair test(Up-Converting Phosphor Technology)

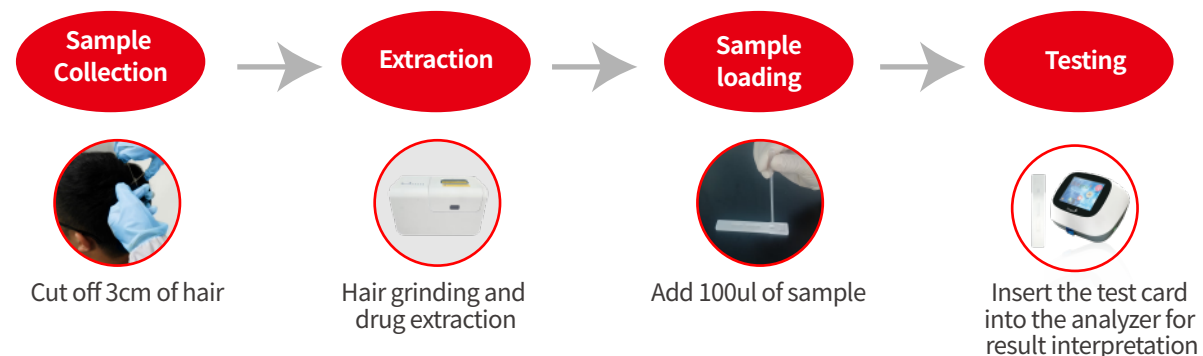
Morphine hair test (Up-Converting Phosphor Technology)

Methamphetamine hair test (Up-Converting Phosphor Technology)



UPT 2800

Hair Drug Abuse Testing Operation Procedure



2、UPT Saliva Drug Abuse Testing Products

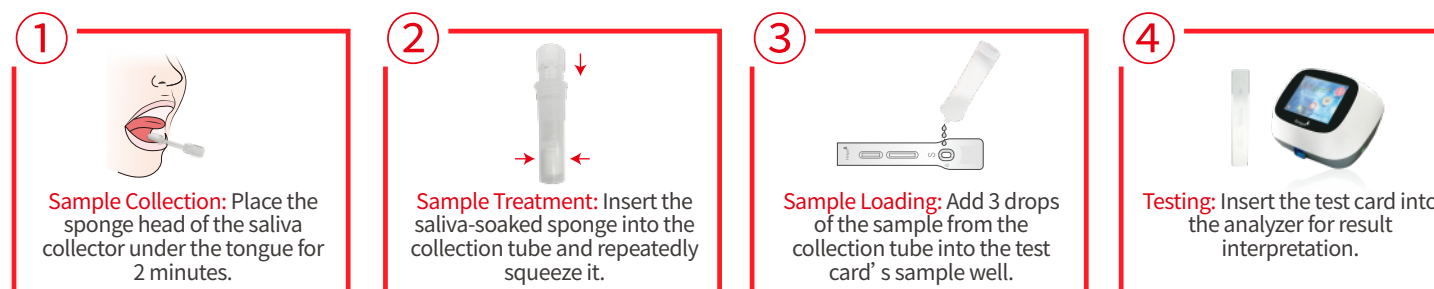


Tetrahydrocannabinol saliva test
(Up-Converting Phosphor Technology)



UPT 2800

Saliva Drug Abuse Testing Operation Procedure



Testing Platform: Up-Converting Phosphor Technology (UPT)
Platform Innovation breakthrough, ushering in a new era of on-site testing!



UPT 2800



Product Features:

- High detection sensitivity. No background interference, demonstrating significant advantages in low-concentration sample detection.
- The luminescence is stable and does not decay. UCP materials do not exhibit fluorescence fading.
- Suitable for multi-sample testing (hair, urine, saliva)
- High throughput, reaction out of device
- The reagent does not require cold chain storage and can be stored at room temperature.